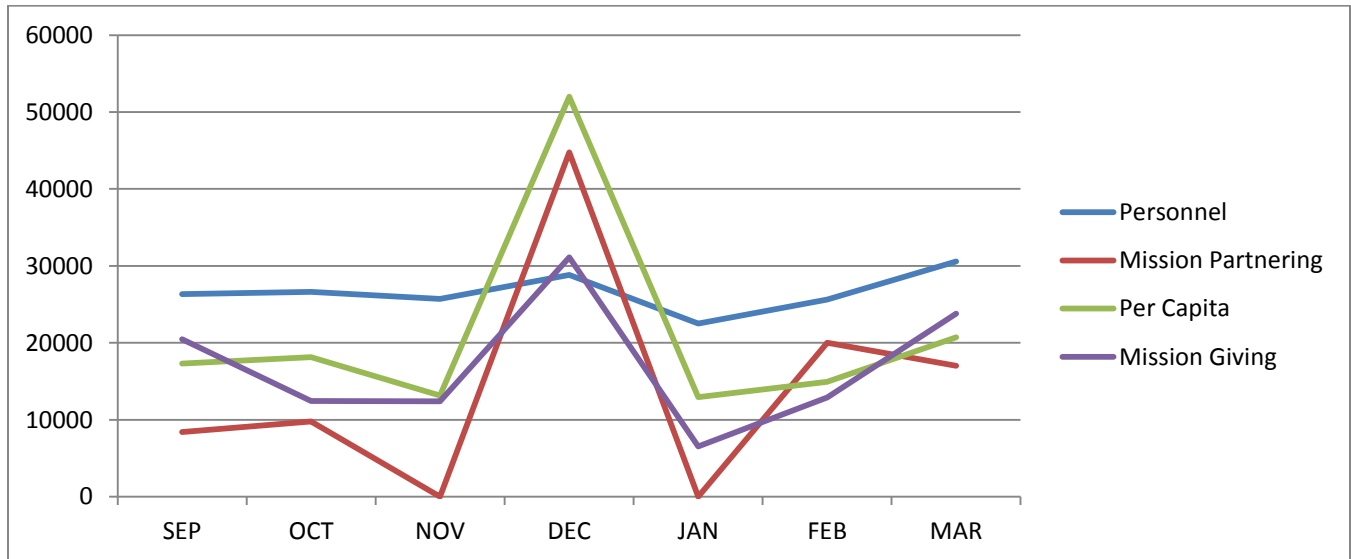
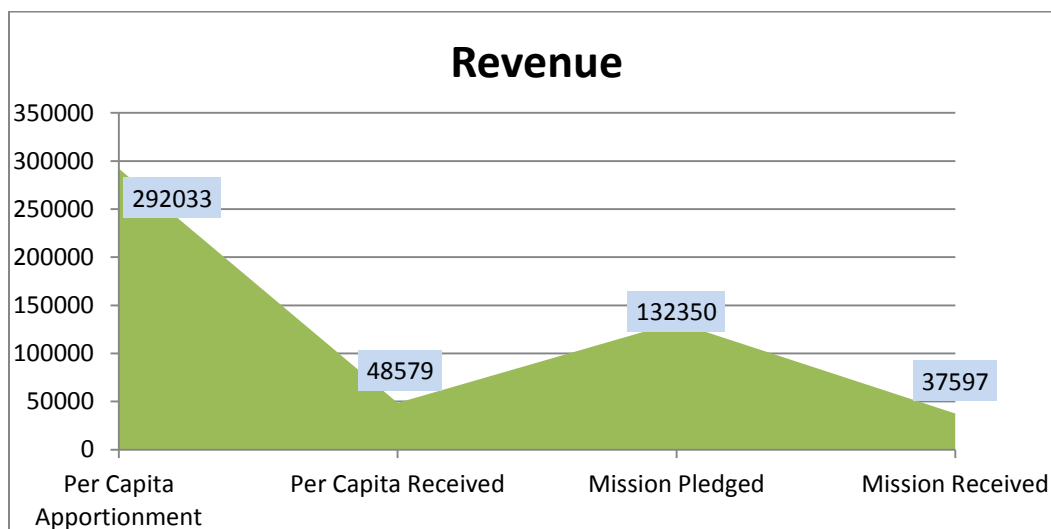


# March 31, 2017 Treasurer's Report

<u>Operations</u>		<u>Month</u>	<u>YTD</u>
<u>Income:</u>	\$	<u>92,628.20</u>	<u>149,663.87</u>
Expenses:		<u>59,009.01</u>	<u>149,914.88</u>
 <u>Cash Flow:</u>		 <u><b>33,619.19</b></u>	 <u><b>-251.01</b></u>



Per Capita is actually the opportunity for each of us to participate equally, responsibly and interdependently by sharing the cost of mission. It's the opportunity to share in our mission of performing ecclesiastical, legislative and judicial functions that identify a reformed church, and at the same time, strengthen the sense of community for all Presbyterians, bringing people together to discern the mind of Christ.



**Per Capita Percent Achieved 16.63%**  
**Mission Giving Percent Achieved 28.41%**

As you can see, this was a good month for the Presbytery financially. It was helped in part by a bequeath we received from the estate of Susan Somerville. Unfortunately, even though the Presbytery has established a Legacy Giving initiative, we should not rely on that program to satisfy all of our financial needs. Mission Giving and Per Capita are two other opportunities everyone has to participate in our Great Mission. Our Per Capita is just under 17% right now, but it should be at 25%. Please make a concerted effort to bring your Per Capita contributions up to date. As always, if you need to, call me at **631-499-7171**, or email me at: [finance@presbyteryofli.org](mailto:finance@presbyteryofli.org).