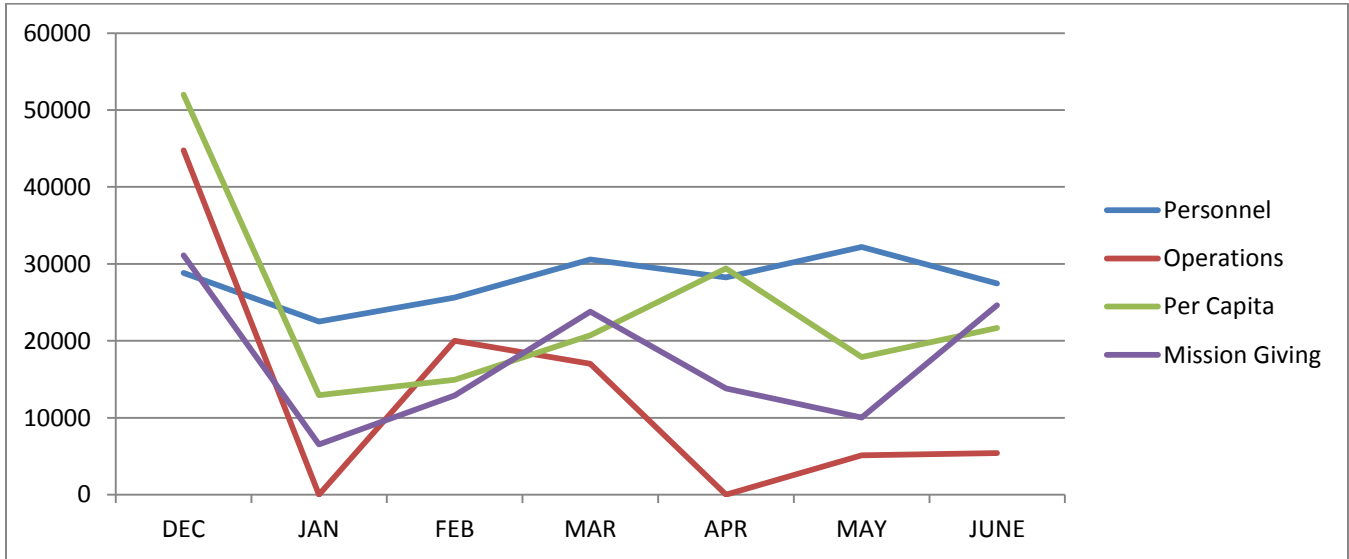
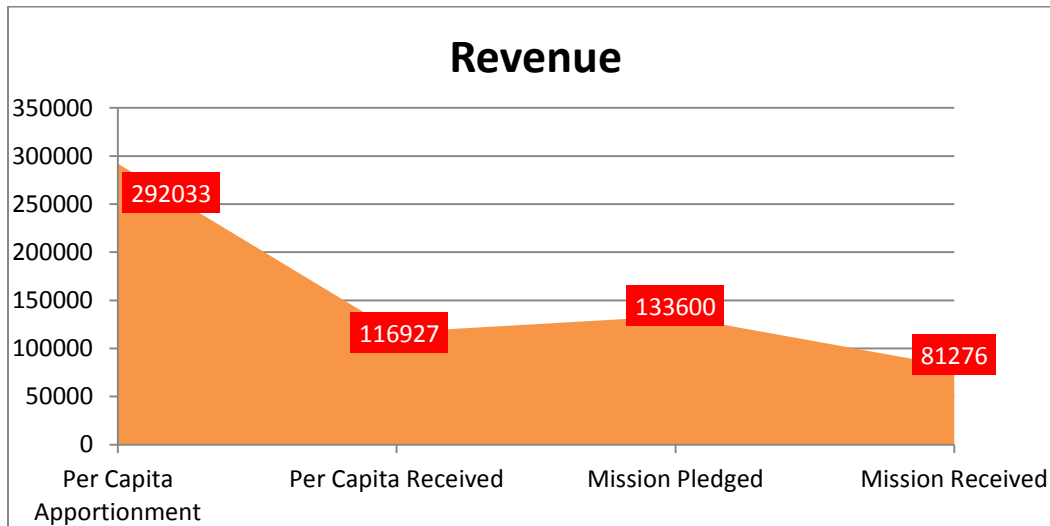


# June 30, 2017 Treasurer's Report

<u>Operations</u>		<u>Month</u>	<u>YTD</u>
Income:	\$	<u>56,229.11</u>	<u>292,707.84</u>
Expenses:		<u>52,998.09</u>	<u>311,377.87</u>
<b>Cash Flow:</b>		<b><u>3,231.03</u></b>	<b><u>-18,670.03</u></b>



Per Capita is actually the opportunity for each of us to participate equally, responsibly and interdependently by sharing the cost of mission. It's the opportunity to share in our mission of performing ecclesiastical, legislative and judicial functions that identify a reformed church, and at the same time, strengthen the sense of community for all Presbyterians, bringing people together to discern the mind of Christ.



**Per Capita Percent Achieved 40.04%**  
**Mission Giving Percent Achieved 60.84%**

We have closed out the second quarter of 2017, and our Per Capita is at 40%.; it SHOULD be at 50% by now. Nevertheless, I am happy that several of our member churches have taken great steps to be sure that their Per Capita contributions are current. I would greatly appreciate it if those of you who are still delinquent could make every effort to bring your Per Capita contributions up to date. If you need any information about your church's account, please call me at 631-499-7171, or email me at: [finance@presbyteryofli.org](mailto:finance@presbyteryofli.org).